

WORK OUT 09
REF: ED.WOROUT09





DIMENSIONES / MEASUREMENTS/ DIMENSIONS

2760 x 240 x 2010 mm

MATERIALES / MATERIALS

120 x 120 mm tubo de acero al carbono de sección cuadrada con 3 mm de espesor y lacado. al horno.

Tubo de acero \varnothing 42mm lacado.

Color: gris forja (estructura) y rojo (tubos interiores)

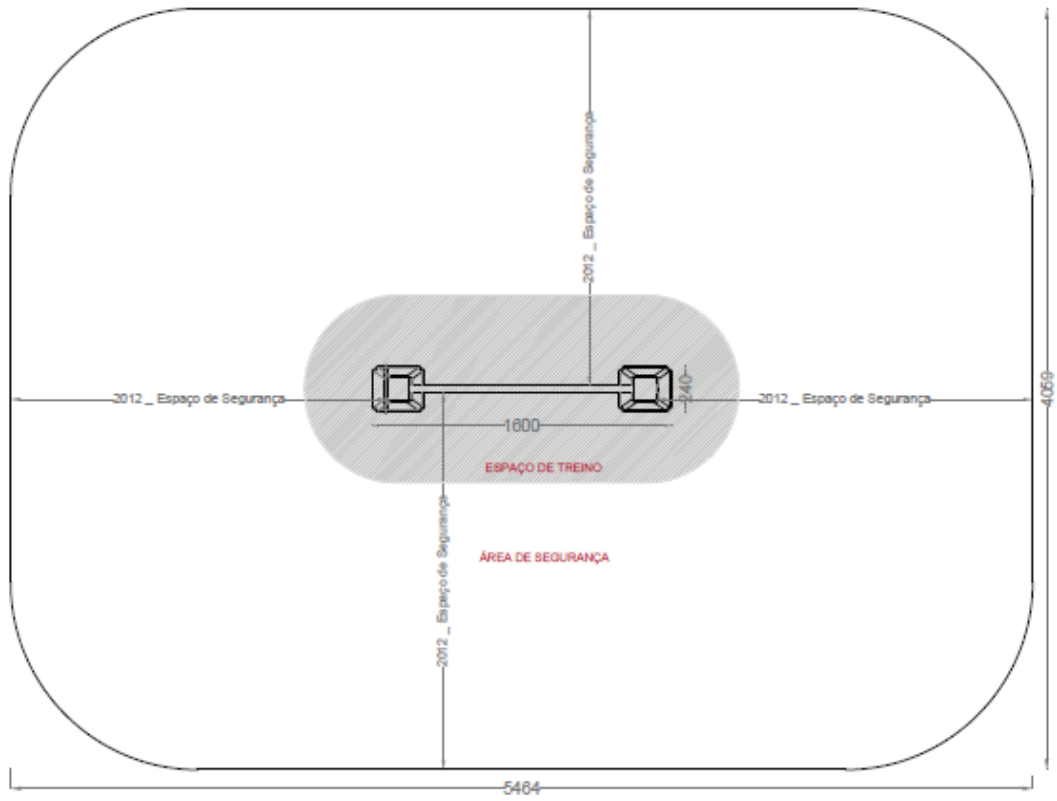
Fijación a través de tacos químicos. El hormigón no debe ser menor de C/20/25.

120 x 120 mm square section tube 3 mm thickness, metallic. polyester powder coated finish.

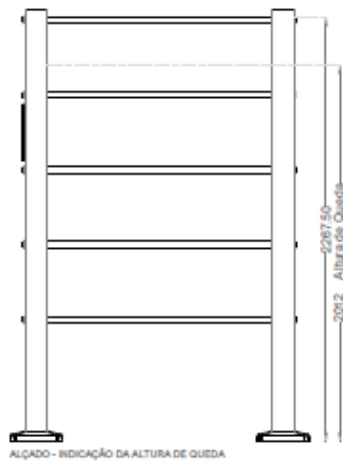
Steel Tube \varnothing 42mm, polyester powder coated finish.

Color: oxiron (structure) and red (interior tubes)

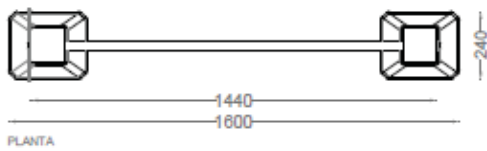
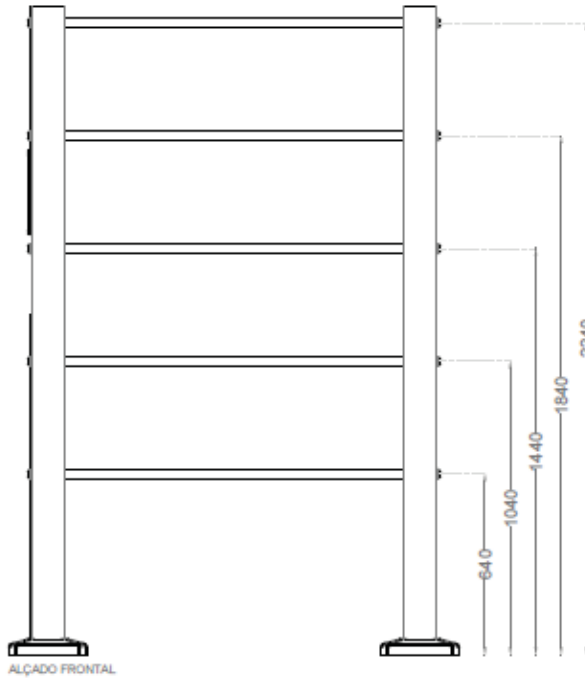
Fixing through chemical blocks. Concrete must not be smaller than C / 20/25

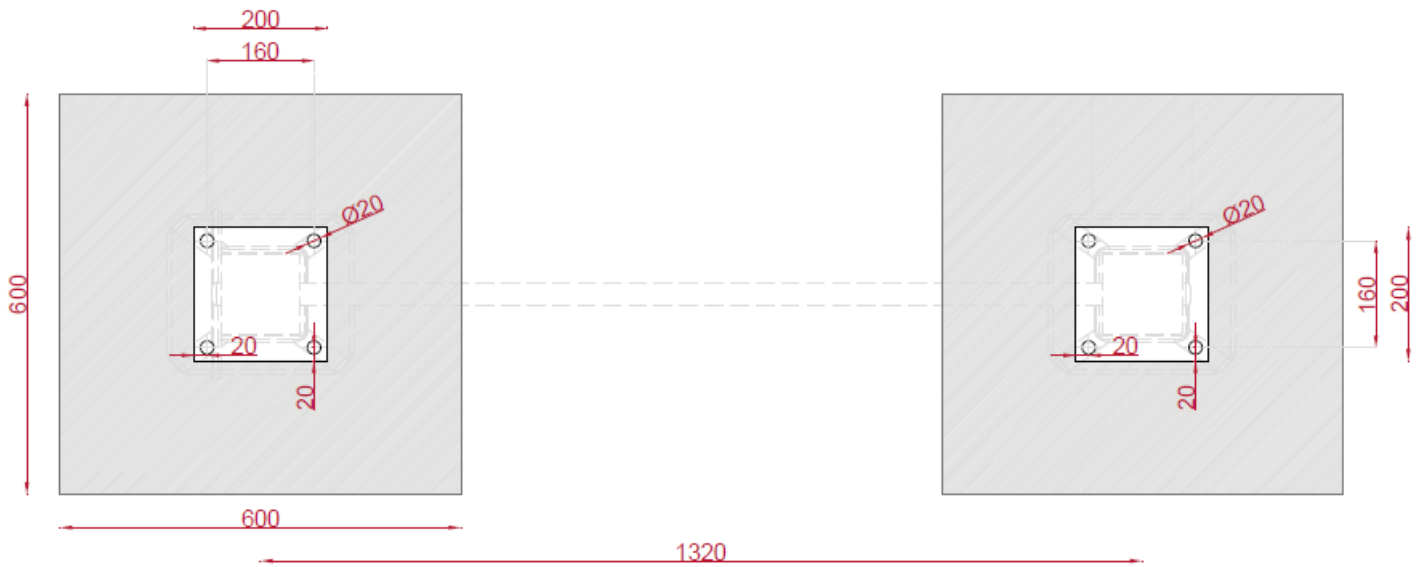


PLANTA - ENQUADRAMENTO DO EQUIPAMENTO NO ESPAÇO DE SEGURANÇA NECESSÁRIO

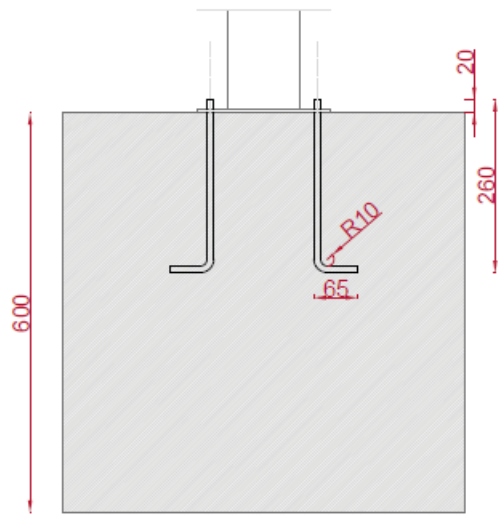


ALÇADO - INDICAÇÃO DA ALTURA DE QUEDA

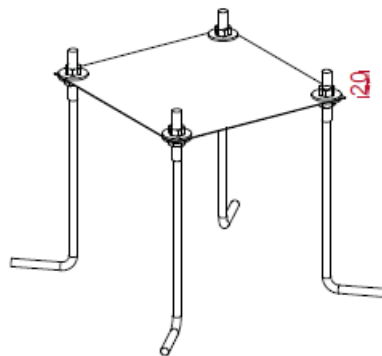




PLANTA



ALÇADO



Componentes do negativo:

* 4 pernos em varão de 12mm, zincado.