

WORK OUT 10
REF: ED.WOROUT10





DIMENSIONES / MEASUREMENTS/ DIMENSIONS

2760 x 240 x 2010 mm

MATERIALES / MATERIALS

120 x 120 mm tubo de acero al carbono de sección cuadrada con 3 mm de espesor y lacado. al horno.

Tubo de acero ø42mm lacado.

Color: gris forja (estructura) y rojo (tubos interiores)

Fijación a través de tacos químicos. El hormigón no debe ser menor de C/20/25.

Argollas en inox revestidas de polietileno color rojo.

Funciones: musculatura abdominal y miembros superiores.

120 x 120 mm square section tube 3 mm thickness, metallic. polyester powder coated finish.

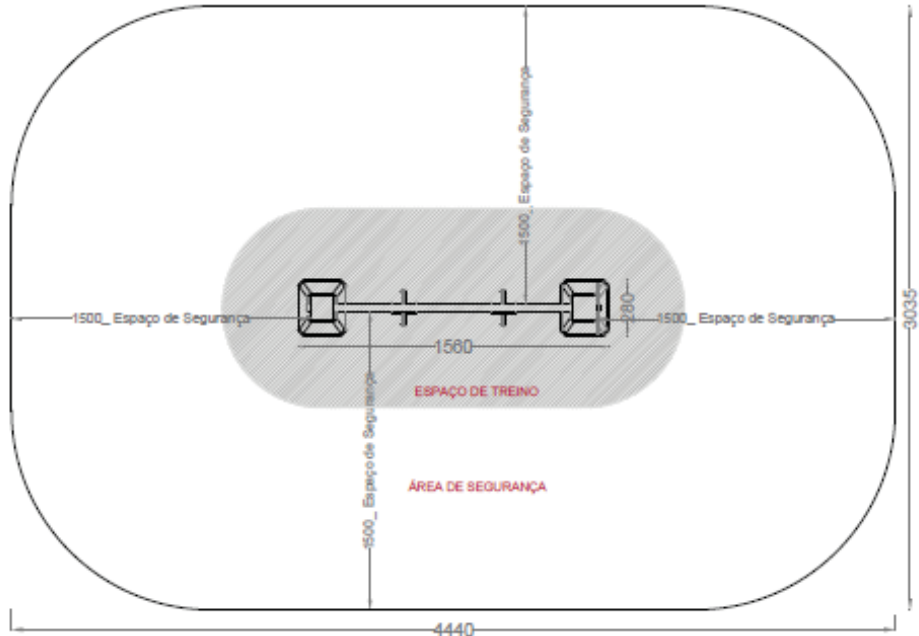
Steel Tube ø42mm, polyester powder coated finish.

Color: oxiron (structure) and red (interior tubes)

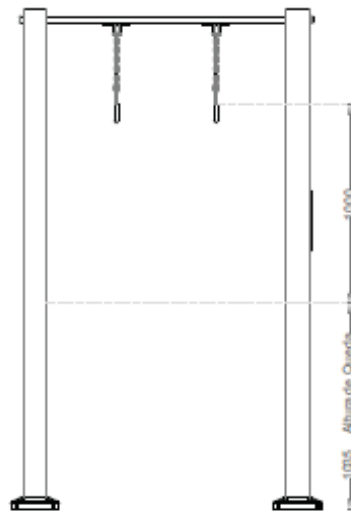
Fixing through chemical blocks. Concrete must not be smaller than C / 20/25

Rings made in stainless steel coated in red polyethylene

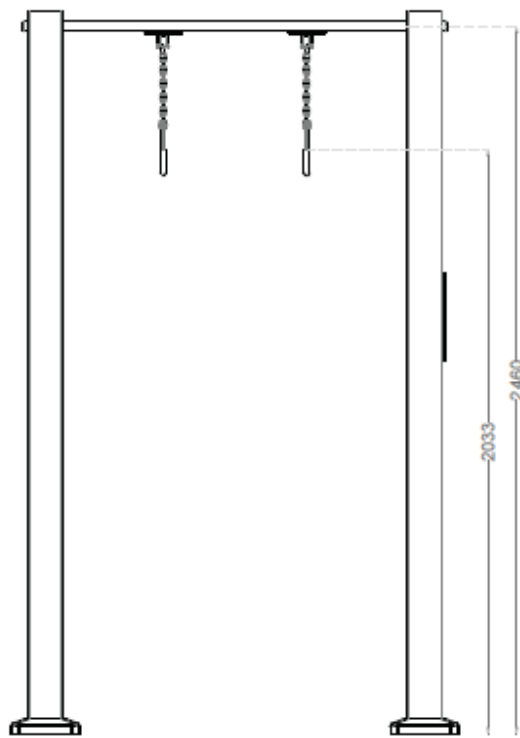
Functions: abdominal muscles and upper limbs.



PLANTA - ENQUADRAMENTO DO EQUIPAMENTO NO ESPAÇO DE SEGURANÇA NECESSÁRIO



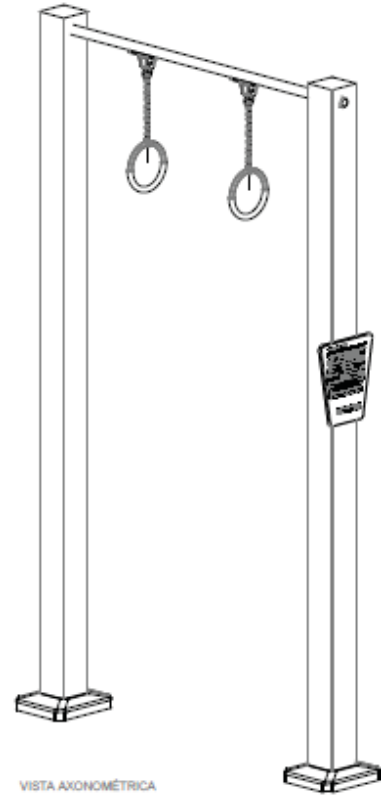
ALÇADO - INDICAÇÃO DA ALTURA DE QUEDA



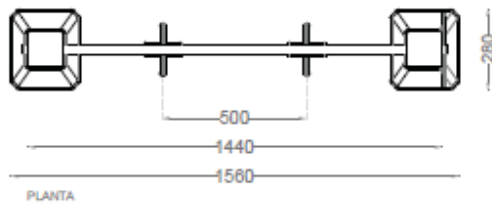
ALÇADO FRONTAL



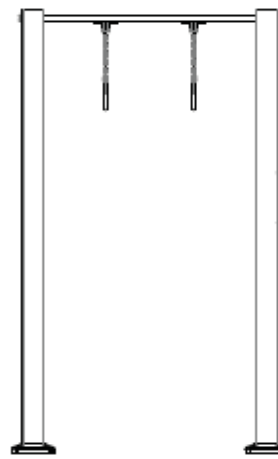
ALÇADO LATERAL



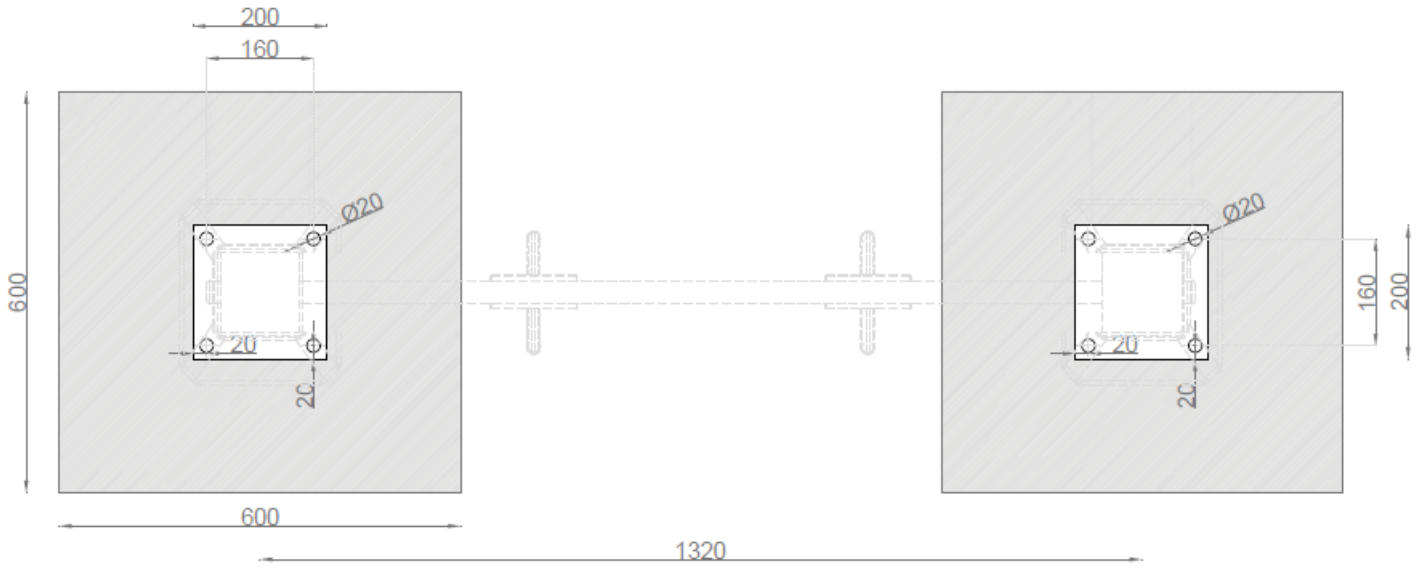
VISTA AXONOMÉTRICA



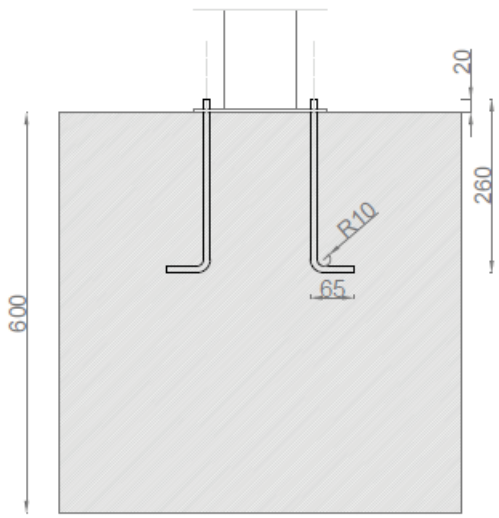
PLANTA



RELAÇÃO HOMEM / OBJECTO



PLANTA



ALÇADO

